

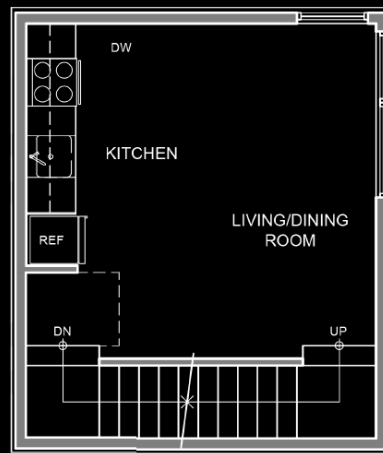
BROOKLYN

526 12th Ave E Seattle, WA 98102

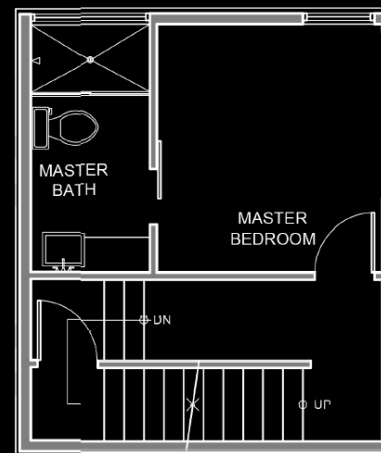
2 beds | 1.75 baths | 968 SF



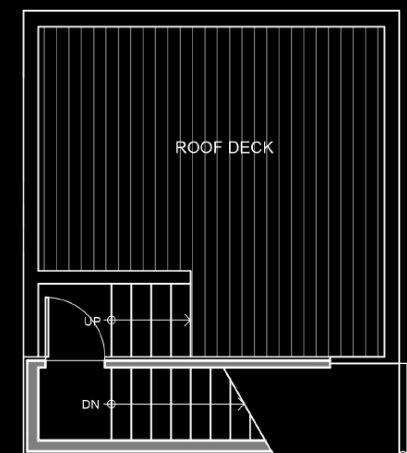
Level 1



Level 2



Level 3



Level 4



info@heronproperties.com :: 206.494.9999 :: www.heronproperties.com

Floor plans are provided for illustrative and general informational purposes only. In a continuing effort to improve our products and designs, final construction elevations, square footages, floor plan layouts and/or materials and colors may vary. Buyer to verify all information to their own satisfaction.

