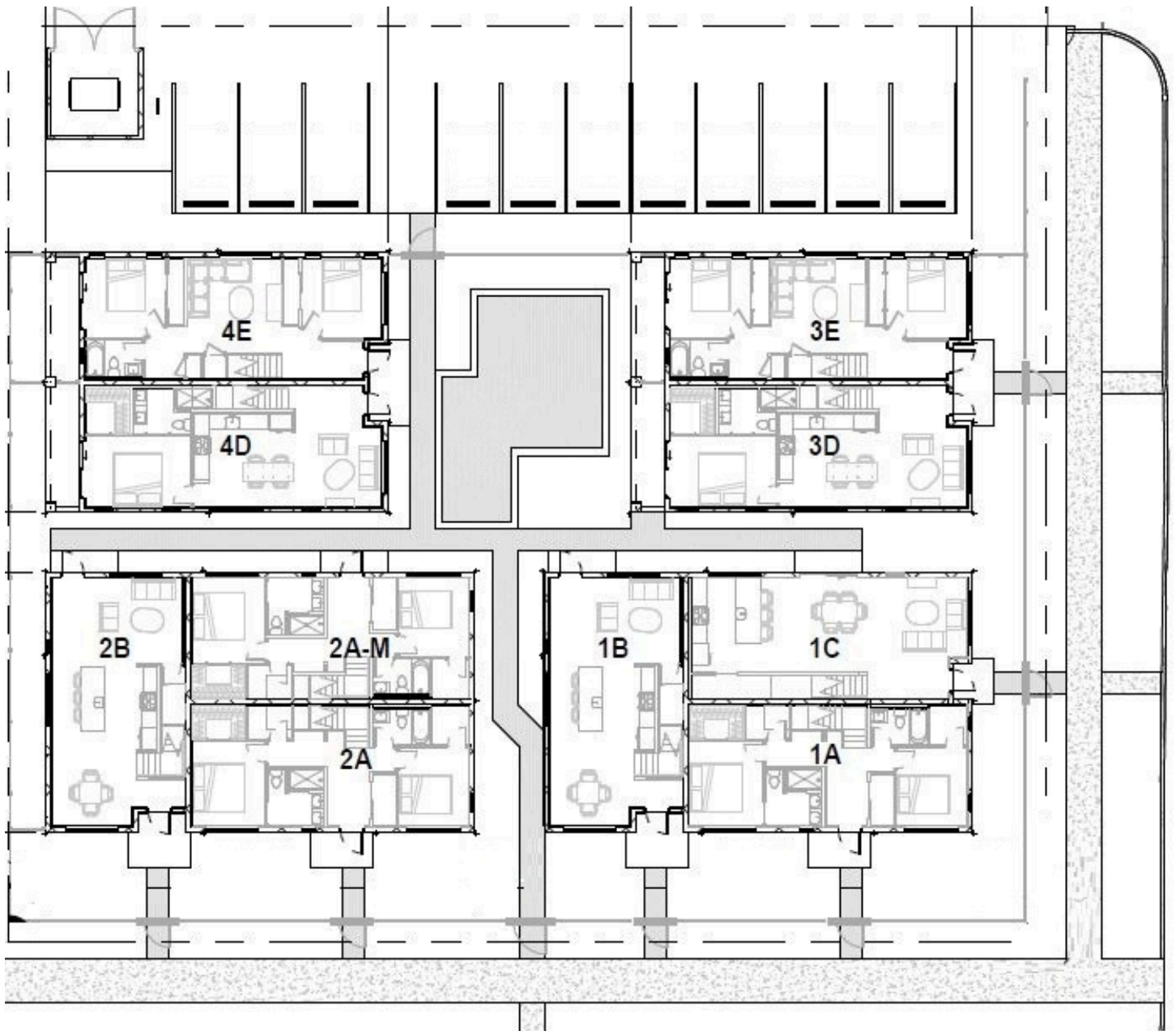


Junction

TOWNHOMES

3601 1st Ave N
St Petersburg, FL



info@heronproperties.com | www.heronproperties.com

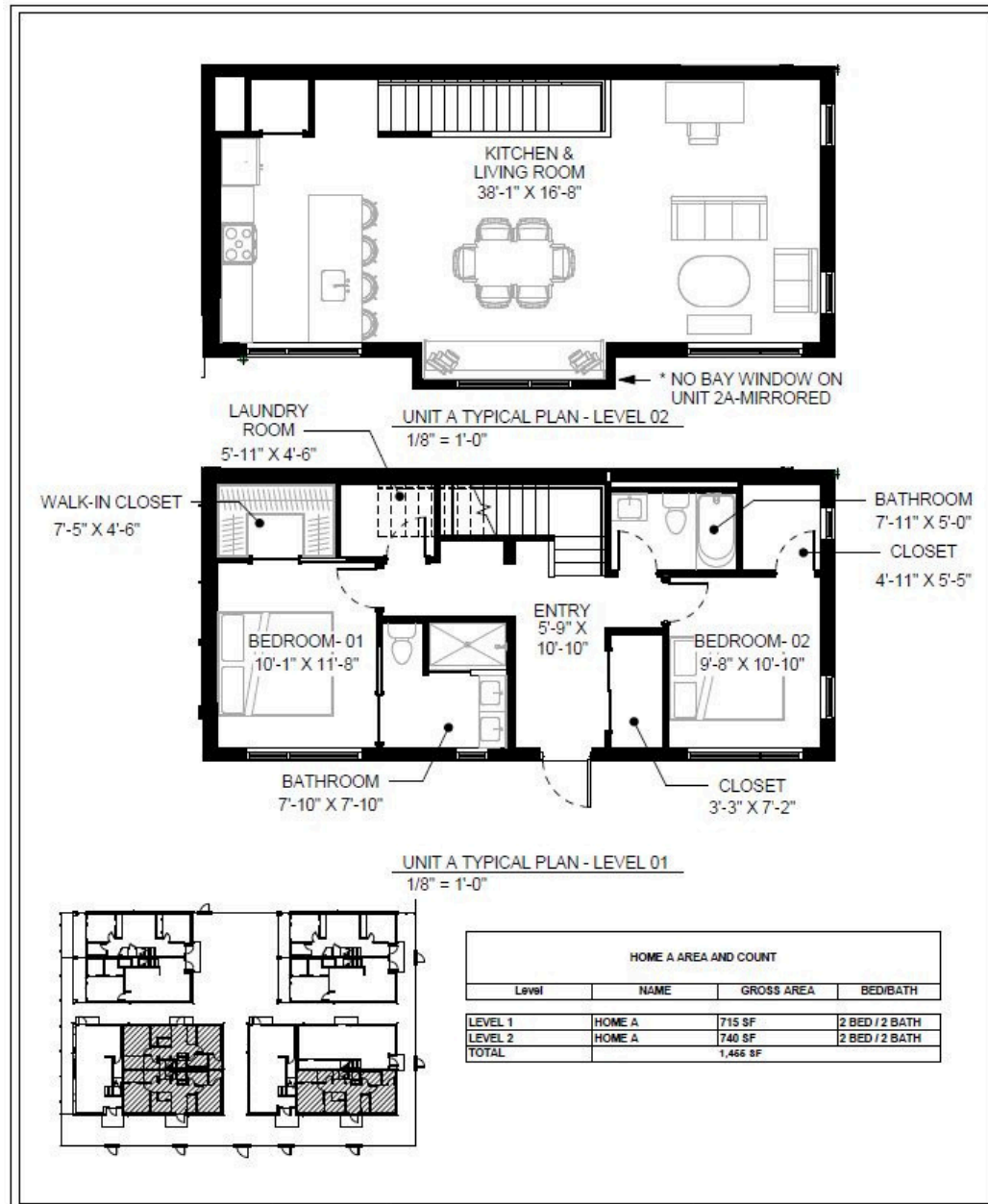
Floor plans are for illustration and general information only. As part of our ongoing commitment to product and design enhancements, final construction details—including elevations, square footage, layouts, materials, and colors—may differ. Buyers are responsible for verifying all information to their satisfaction.



Function

TOWNHOMES

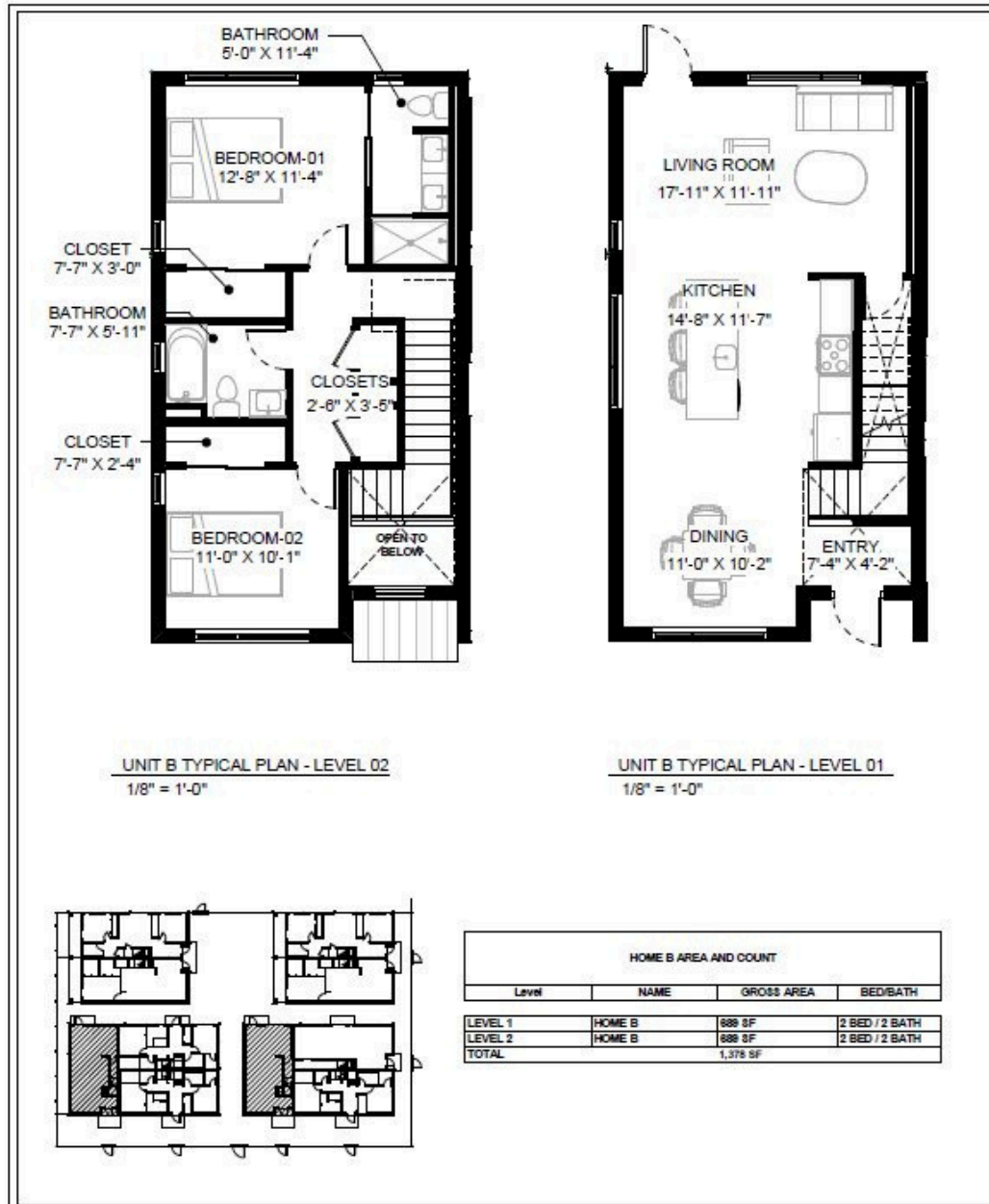
3601 1st Ave N
St Petersburg, FL
Home 1A, 2A, 2A-M
2 beds | 2 baths | 1455 SF | 1 parking



info@heronproperties.com | www.heronproperties.com

Floor plans are for illustration and general information only. As part of our ongoing commitment to product and design enhancements, final construction details—including elevations, square footage, layouts, materials, and colors—may differ. Buyers are responsible for verifying all information to their satisfaction.

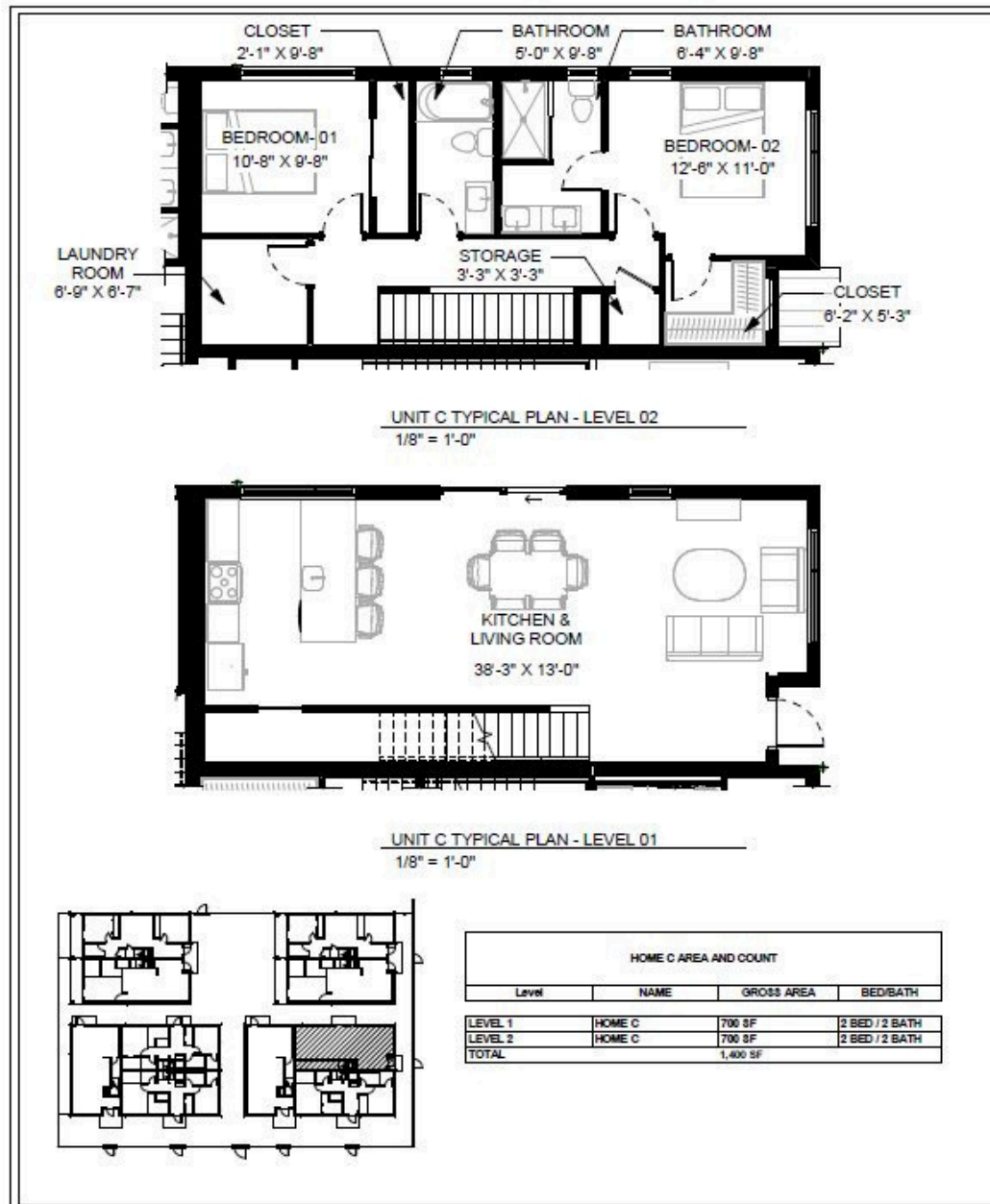




Junction

TOWNHOMES

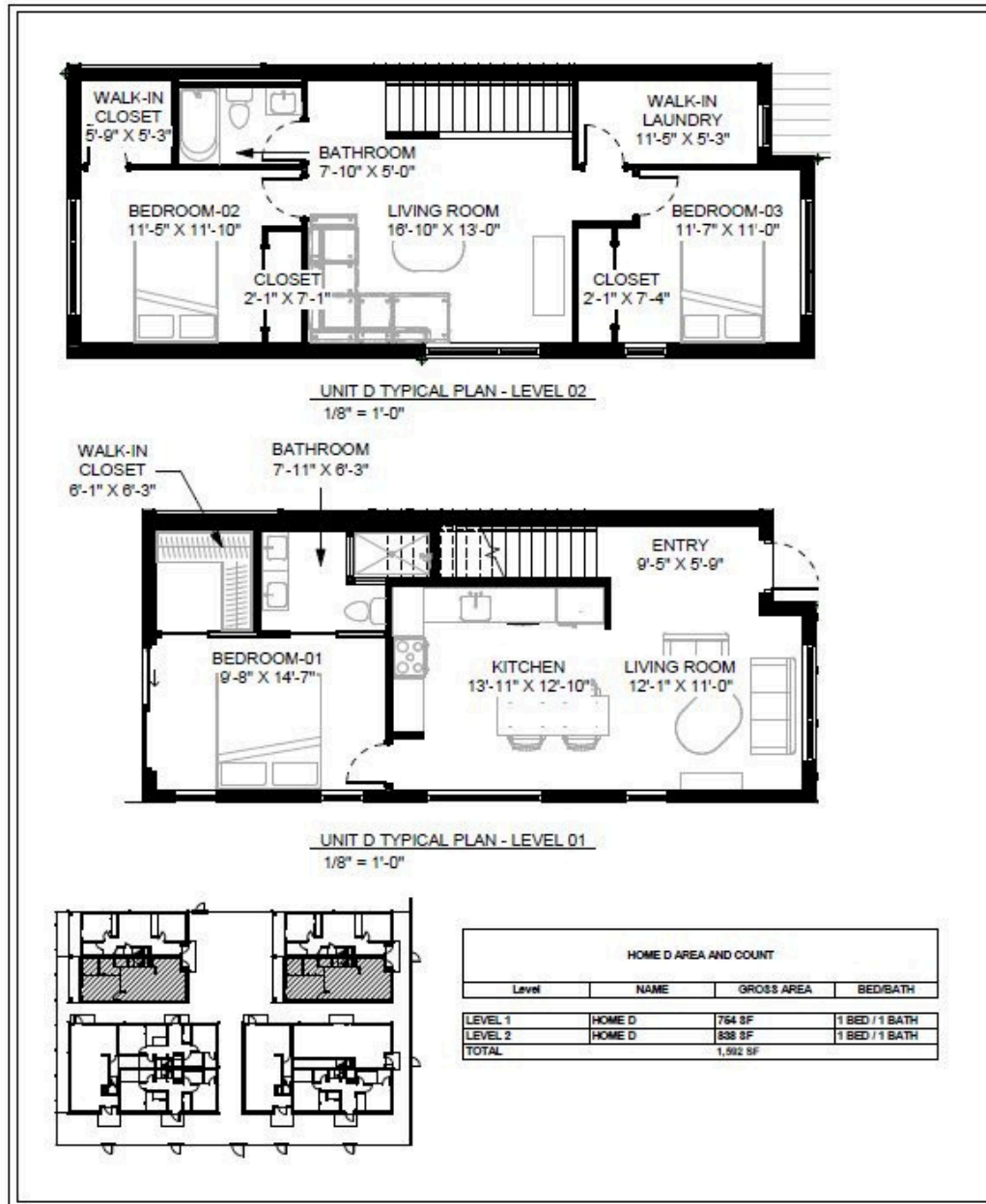
3601 1st Ave N
St Petersburg, FL
Home 1C
2 beds | 2 baths | 1400 SF | 1 parking



info@heronproperties.com | www.heronproperties.com

Floor plans are for illustration and general information only. As part of our ongoing commitment to product and design enhancements, final construction details—including elevations, square footage, layouts, materials, and colors—may differ. Buyers are responsible for verifying all information to their satisfaction.

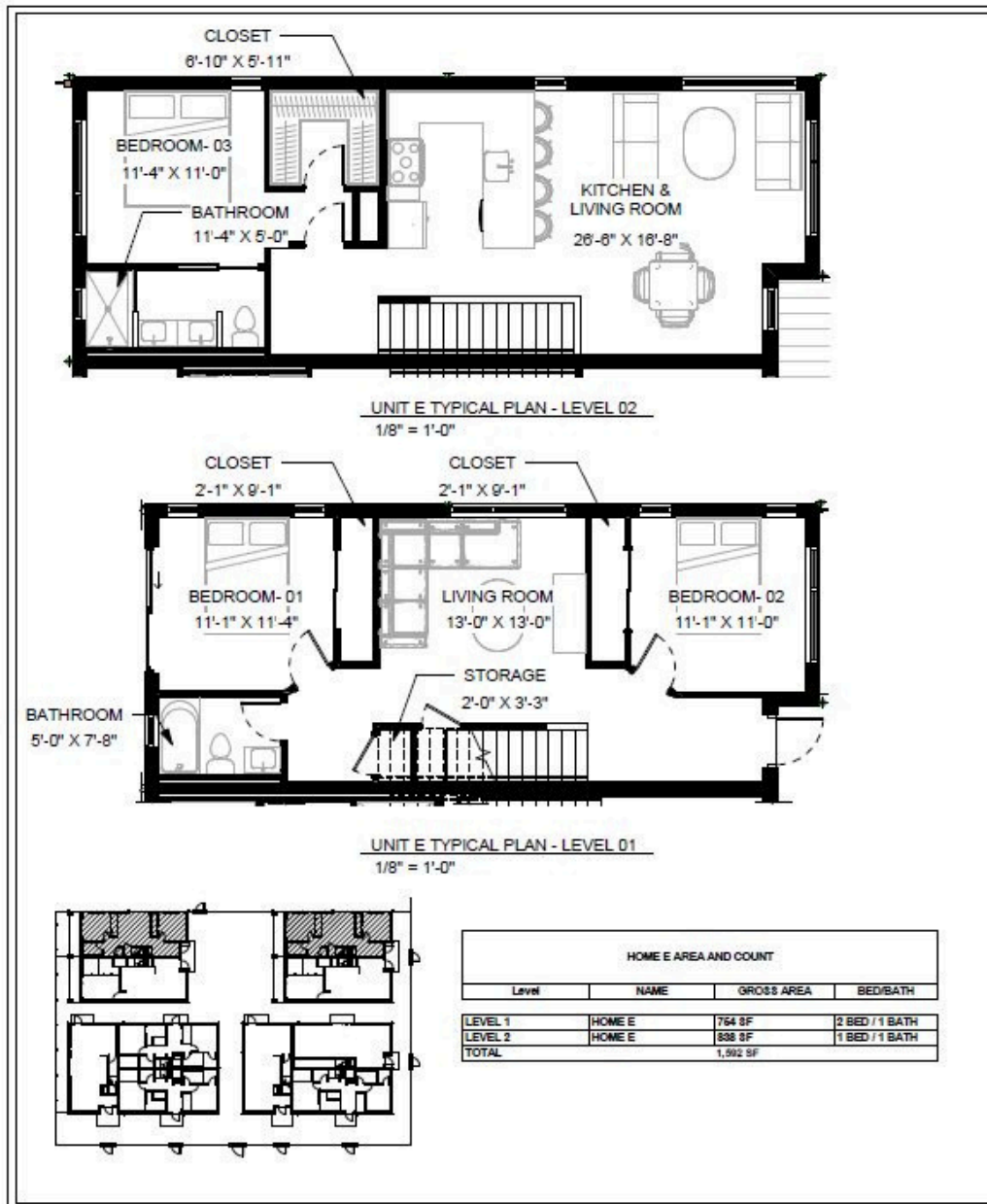




Function

TOWNHOMES

3601 1st Ave N
St Petersburg, FL
Home 3E, 4E
3 beds + den | 2 baths | 1592 SF | 1 parking



info@heronproperties.com | www.heronproperties.com

Floor plans are for illustration and general information only. As part of our ongoing commitment to product and design enhancements, final construction details—including elevations, square footage, layouts, materials, and colors—may differ. Buyers are responsible for verifying all information to their satisfaction.

